

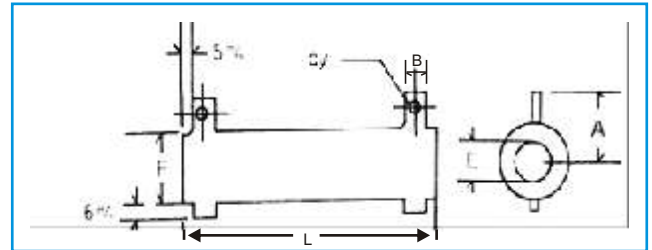
POWER RADIAL TYPE WIREWOUND RESISTORS

Series: MSR

Dimension:

Features:

- ▶ Widest range in the industry.
- ▶ High performance for low cost.
- ▶ High-temperature flame proof silicon coating.
- ▶ Tolerance to ± 5 , $\pm 10\%$.
- ▶ Better tolerance available on request.
- ▶ Custom sizes and terminations available.



Physical Data:

RATED WATTS	D TYPE DIMENSIONS (m/m)				
	L	F	E	A	B
10W	45	12	6	15	4
20W	60	17	8	20	5
30W	80	17	8	20	5
40W	110	17	8	20	5
50W	110	25	10	30	8
60W	90	28	18	32	8
80W	110	28	18	32	8
100W	140	28	18	32	8
120W	160	28	18	32	8
150W	195	28	18	32	8
160W	185	35	24	38	8
200W	210	35	24	38	8
260W	210	40	25	38	10
300W	260	40	25	38	10
400W	330	40	25	38	10
500W	330	50	35	50	15
600W	400	50	35	50	15
800W	460	60	40	60	15
1000W	540	80	40	60	15
1200W	650	85	42	62	15

Technical Data:

Tolerance	$\pm 1\%$, $\pm 2\%$, $\pm 5\%$ & $\pm 10\%$
Temperature coefficient	± 200 ppm/ $^{\circ}$ C
Power dissipation	Rated at 70 $^{\circ}$ C Ambient derated linearly to Zero power at 350 $^{\circ}$ C
Load life stability	$\Delta R < \pm 5\%$ full load dissipation for 1000 hrs
Maximum Voltage	\sqrt{PR} Where P = Power in Watt, R = Resistance in ohms
Overload	10x rated power for 5 sec., $\Delta R = \pm 2\%$
Temperature Rise	250 - 325 $^{\circ}$ C
Operating Temp.	-55 $^{\circ}$ C to +350 $^{\circ}$ C
Dielectric Strength	1000 VAC

Temp. Characteristics :

